

TABLE OF PRODUCTS FOR EACH STEP OF YOUR IHC WORKFLOW

Tissue Preparation	Antigen Retrieval	Quench/Block	Primary Antibody/Lectins*	Secondary Antibody	Tertiary Reagent	Substrate/Chromogen	Counterstain	Coverslip/Mount	Visualize
<ul style="list-style-type: none"> • VECTABOND Tissue Section Adhesive • ImmPrint Histology Pen • ImmEdge Hydrophobic Barrier Pen 	<ul style="list-style-type: none"> • Antigen Unmasking Solutions, Citrate- or Tris-based 	<ul style="list-style-type: none"> • BLOXALL Endogenous HRP and AP Blocking Solution • Avidin/Biotin Blocking Kit • Streptavidin/Biotin Blocking Kit • Normal Sera • Animal-Free Blocker and Diluent • BSA • Casein Solution • M.O.M. Mouse Ig Blocking Reagent • Carbo-Free Block 	<ul style="list-style-type: none"> • Biotinylated lectins • Unconjugated lectins 	<ul style="list-style-type: none"> • ImmPRESS Polymer Reagents (HRP or AP) • ImmPRESS PLUS Polymer Reagents (HRP) • ImmPRESS Duet Polymer Reagents (HRP/AP) • M.O.M. (Mouse on Mouse) ImmPRESS Polymer Kit • M.O.M. (Mouse on Mouse) Basic Kit • H.O.H. (Human on Human) Immunodetection Kit • Biotinylated secondary antibodies • Unconjugated secondary antibodies • Enzyme-conjugated secondary antibodies (HRP or AP) • Biotinylated anti-lectins 	<ul style="list-style-type: none"> • VECTASTAIN ABC Reagents (HRP) • VECTASTAIN Elite ABC Reagents (HRP) • VECTASTAIN ABC-AP Reagents (AP) • VECTASTAIN Elite ABC PLUS Kit (HRP) • ImmPRESS Excel Amplified Staining Kits (HRP) • M.O.M. (Mouse on Mouse) Elite Kit (HRP) • Enzyme-conjugated avidin/streptavidin (HRP or AP) 	<ul style="list-style-type: none"> • HRP substrates • AP substrates/Levamisole Solution 	<ul style="list-style-type: none"> • Hematoxylin • Methyl Green • Nuclear Fast Red 	<ul style="list-style-type: none"> • VectaMount Express Mounting Medium • VectaMount Permanent Mounting Medium • VectaMount AQ Aqueous Mounting Medium 	

* For more information visit: vectorlabs.com/lectins

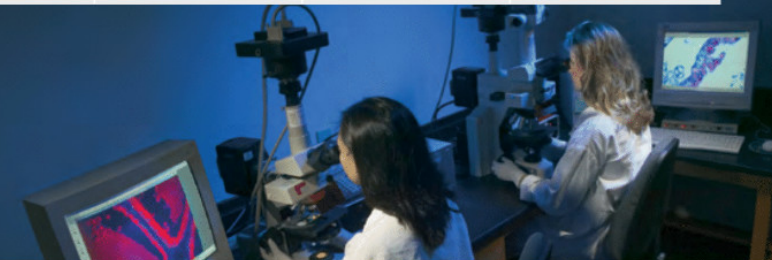


TABLE OF PRODUCTS FOR EACH STEP OF YOUR IF WORKFLOW

Tissue Preparation	Antigen Retrieval	Quench/Block	Primary Antibody/Lectins*	Secondary Antibody	Tertiary Reagent	Counterstain/Mount	Visualize
<ul style="list-style-type: none"> • VECTABOND Tissue Section Adhesive • ImmPrint Histology Pen • ImmEdge Hydrophobic Barrier Pen 	<ul style="list-style-type: none"> • Antigen Unmasking Solutions, Citrate- or Tris-based 	<ul style="list-style-type: none"> • TrueVIEW Autofluorescence Quenching Kit** • TrueVIEW Autofluorescence Quenching Kit with DAPI** • Avidin/Biotin Blocking Kit • Streptavidin/Biotin Blocking Kit • Normal Sera • R.T.U. Animal-Free Blocker® and Diluent • BSA • Casein Solution • M.O.M. (Mouse on Mouse) Blocking Reagent • Carbo-Free Block • BLOXALL Endogenous HRP/AP Blocking Solution 	<ul style="list-style-type: none"> • Biotinylated lectins • Fluorochrome-conjugated lectins • Unconjugated lectins 	<ul style="list-style-type: none"> • VectaFluor DyLight R.T.U. Secondary Antibodies • VectaFluor Duet IF Double Labeling Kits • M.O.M. (Mouse on Mouse) Immunodetection Kits • Biotinylated secondary antibodies • Fluorochrome-conjugated secondary antibodies • Unconjugated secondary antibodies 	<ul style="list-style-type: none"> • VectaFluor Excel DyLight Amplified Fluorescent Staining Systems • Fluorochrome-conjugated avidin or streptavidin • Biotinylated anti-avidin amplifying reagent • Biotinylated anti-streptavidin amplifying reagent 	<ul style="list-style-type: none"> • VECTASHIELD Antifade Mounting Medium • VECTASHIELD Antifade Mounting Medium with DAPI • VECTASHIELD Antifade Mounting Medium with Propidium Iodide (PI) • VECTASHIELD HardSet Antifade Mounting Medium • VECTASHIELD HardSet Antifade Mounting Medium with DAPI • VECTASHIELD HardSet Antifade Mounting Medium with TRITC-Phalloidin • VECTASHIELD Vibrance Antifade Mounting Medium • VECTASHIELD Vibrance Antifade Mounting Medium with DAPI • VECTASHIELD PLUS Antifade Mounting Medium • VECTASHIELD PLUS Antifade Mounting Medium with DAPI 	

* For more information visit: vectorlabs.com/lectins
 ** TrueVIEW Autofluorescence Quenching is applied just prior to coverslipping

